

spotlux

— DESDE 2002 —

Pode comprar no escuro.

## QUEM SOMOS

A Spotlux ingressou no segmento de iluminação em 2002.

Com a indústria instalada em Curitiba, Paraná, promovemos o desenvolvimento, fabricação e venda de produtos de iluminação interna e externa. Contamos com uma equipe de funcionários capacitados e treinados para produzir os melhores refletores, luminárias e perfis do mercado.

A Empresa conta também com uma unidade própria de negócios em Shenzhen - China, local onde são desenvolvidos e industrializados produtos com tecnologia em LED, permitindo-nos ter acesso as mais recentes tendências na área de iluminação e garantir a qualidade dos produtos importados.

Estamos em constante busca por soluções inovadoras e criativas objetivando atender as necessidades dos nossos clientes.

Com uma variedade de opções disponibilizamos produtos para diversos segmentos como residencial, comercial e industrial, além de projetos e empreendimentos personalizados.

Reconhecida pela excelência de seus produtos, seriedade na condução dos negócios e ética profissional tornou-se referência no ramo.

### NOVIDADE!

## REFLETOR LED TOWER LIGHT

POTÊNCIA	LUMENS	COR (K)	CÓDIGO
1.500W	150.000	• Branca (6000k)	TL1500



- ✓ Válvula anti-condensação
- ✓ Corpo em alumínio injetado
- ✓ 2 coolers para maior dissipação do calor





## REFLETOR LED LOOKLED

POTÊNCIA	LUMENS	COR (K)	CÓDIGO
10W	900	• Branca (6000k)	LL106000
	900	• Amarela (3000k)	LL103000
	-	• Verde	LL1010
	-	• Azul	LL1020
20W	1.800	• Branca (6000k)	LL206000
	1.800	• Amarela (3000k)	LL203000
	-	• Verde	LL2010
	-	• Azul	LL2020
30W	2.700	• Branca (6000k)	LL306000
	2.700	• Amarela (3000k)	LL303000
	-	• Verde	LL3010
	-	• Azul	LL3020
50W	4.500	• Branca (6000k)	LL506000
	4.500	• Amarela (3000k)	LL503000
	-	• Verde	LL5010
	-	• Azul	LL5020
100W	9.000	• Branca (6000k)	LL1006000
	9.000	• Amarela (3000k)	LL1003000
	-	• Verde	LL10010
150W	13.500	• Branca (6000k)	LL1506000
200W	18.000	• Branca (6000k)	LL2006000
300W	27.000	• Branca (6000k)	LL3006000/N
400W	36.000	• Branca (6000k)	LL4006000
500W	45.000	• Branca (6000k)	LL5006000
600W	54.000	• Branca (6000k)	LL6006000



Válvula anti-condensação

## REFLETOR LED LOOKLED RGB

POTÊNCIA	COR (K)	CÓDIGO
10W	• RGB	LL10RGB
50W	• RGB	LL50RGB
100W	• RGB	LL100RGB



Válvula anti-condensação

## REFLETOR LED SOLAR

POTÊNCIA	COR (K)	CÓDIGO
50W	• Branca (6000k)	RS506000
100W	• Branca (6000k)	RS1006000
200W	• Branca (6000k)	RS2006000



Válvula anti-condensação

Corpo em alumínio injetado

## REFLETOR LED WINLED



Válvula anti-condensação



Válvula anti-condensação

POTÊNCIA	LUMENS	COR (K)	CÓDIGO
10W	800	• Branca (6000k)	WL106000
	800	• Amarela (3000k)	WL103000
	-	• Verde	WL1010
	-	• Azul	WL1020
20W	1.500	• Branca (6000k)	WL206000
	1.500	• Amarela (3000k)	WL203000
	-	• Verde	WL2010
	-	• Azul	WL2020
30W	2.300	• Branca (6000k)	WL306000
	2.300	• Amarela (3000k)	WL303000
	-	• Verde	WL3010
	-	• Azul	WL3020
50W	3.750	• Branca (6000k)	WL506000
	3.750	• Amarela (3000k)	WL503000
	-	• Verde	WL5010
	-	• Azul	WL5020
100W	7.500	• Branca (6000k)	WL1006000
	7.500	• Amarela (3000k)	WL1003000
	-	• Verde	WL10010
150W	11.250	• Branca (6000k)	WL1506000
200W	15.000	• Branca (6000k)	WL2006000
300W	22.500	• Branca (6000k)	WL3006000
400W	30.000	• Branca (6000k)	WL4006000
500W	37.500	• Branca (6000k)	WL5006000

## REFLETOR LED HILED

POTÊNCIA	LUMENS	COR (K)	CÓDIGO
10W	1.000	• Branca (6000k)	HI106000
		• Amarela (3000k)	HI103000
30W	3.000	• Branca (6000k)	HI306000
		• Amarela (3000k)	HI303000
50W	5.000	• Branca (6000k)	HI506000
		• Amarela (3000k)	HI503000
100W	10.000	• Branca (6000k)	HI1006000
		• Amarela (3000k)	HI1003000
200W	20.000	• Branca (6000k)	HI2006000
300W	30.000	• Branca (6000k)	HI3006000

## LUMINÁRIAS LED RETANGULARES DE EMBUTIR

POT.	LUM.	FORMATO	TAMANHO	COR (K)	CÓDIGO
22W	2.200	RET.	620*170mm*32mm N: 595*145mm	• Branca (6500k)	18226500
				• Neutra (4000k)	18224000
				• Amarela (3000k)	18223000
32W	3.200	RET.	620*320mm*32mm N: 595*295mm	• Branca (6500k)	17326500
				• Neutra (4000k)	17324000
				• Amarela (3000k)	17323000
32W	3.200	RET.	1220*170mm*32mm N: 1195*145mm	• Branca (6500k)	18326500
				• Neutra (4000k)	18324000
				• Amarela (3000k)	18323000
40W*	4.000	RET.	1220*320mm*32mm N: 1195*295mm	• Branca (6500k)	17406500
				• Neutra (4000k)	17404000
				• Amarela (3000k)	17403000



\* NOVO MODELO: 1243\*320\*32 mm / N: 1218\*295 mm

# SPOTLIGHT

POT.	LUM.	FORMATO	TAMANHO	COR (K)	CÓDIGO
5W	450	Q	90*90mm*24mm N: Ø70mm	<ul style="list-style-type: none"> <li>Branca (6500k)</li> <li>Neutra (4000k)</li> <li>Amarela (3000k)</li> </ul>	<ul style="list-style-type: none"> <li>30056500</li> <li>30054000</li> <li>30053000</li> </ul>
5W	450	R	Ø90*24mm N: Ø70mm	<ul style="list-style-type: none"> <li>Branca (6500k)</li> <li>Neutra (4000k)</li> <li>Amarela (3000k)</li> </ul>	<ul style="list-style-type: none"> <li>31056500</li> <li>31054000</li> <li>31053000</li> </ul>
7W	630	Q	EM BREVE	<ul style="list-style-type: none"> <li>Branca (6500k)</li> <li>Neutra (4000k)</li> <li>Amarela (3000k)</li> </ul>	<ul style="list-style-type: none"> <li>30076500</li> <li>30074000</li> <li>30073000</li> </ul>
7W	630	R	EM BREVE	<ul style="list-style-type: none"> <li>Branca (6500k)</li> <li>Neutra (4000k)</li> <li>Amarela (3000k)</li> </ul>	<ul style="list-style-type: none"> <li>31076500</li> <li>31074000</li> <li>31073000</li> </ul>
9W	810	Q	EM BREVE	<ul style="list-style-type: none"> <li>Branca (6500k)</li> <li>Neutra (4000k)</li> <li>Amarela (3000k)</li> </ul>	<ul style="list-style-type: none"> <li>30096500</li> <li>30094000</li> <li>30093000</li> </ul>
9W	810	R	EM BREVE	<ul style="list-style-type: none"> <li>Branca (6500k)</li> <li>Neutra (4000k)</li> <li>Amarela (3000k)</li> </ul>	<ul style="list-style-type: none"> <li>31096500</li> <li>31094000</li> <li>31093000</li> </ul>
12W	1.080	Q	EM BREVE	<ul style="list-style-type: none"> <li>Branca (6500k)</li> <li>Neutra (4000k)</li> <li>Amarela (3000k)</li> </ul>	<ul style="list-style-type: none"> <li>30126500</li> <li>30124000</li> <li>30123000</li> </ul>
12W	1.080	R	EM BREVE	<ul style="list-style-type: none"> <li>Branca (6500k)</li> <li>Neutra (4000k)</li> <li>Amarela (3000k)</li> </ul>	<ul style="list-style-type: none"> <li>31126500</li> <li>31124000</li> <li>31123000</li> </ul>



## LUMINÁRIAS LED EMBUTIR

POT.	LUM.	FORMATO	TAMANHO	COR (K)	CÓDIGO
6W	420	Q	120*120mm*20mm N: 105mm*105mm	<ul style="list-style-type: none"> <li>Branca (6500k)</li> <li>Neutra (4000k)</li> <li>Amarela (3000k)</li> </ul>	<ul style="list-style-type: none"> <li>13066500</li> <li>13064000</li> <li>13063000</li> </ul>
6W	420	R	Ø120mm*20mm N: Ø105mm	<ul style="list-style-type: none"> <li>Branca (6500k)</li> <li>Neutra (4000k)</li> <li>Amarela (3000k)</li> </ul>	<ul style="list-style-type: none"> <li>12066500</li> <li>12064000</li> <li>12063000</li> </ul>
12W	840	Q	170*170mm*20mm N: 150mm*150mm	<ul style="list-style-type: none"> <li>Branca (6500k)</li> <li>Neutra (4000k)</li> <li>Amarela (3000k)</li> </ul>	<ul style="list-style-type: none"> <li>13126500</li> <li>13124000</li> <li>13123000</li> </ul>
12W	840	R	Ø170mm*20mm N: Ø150mm	<ul style="list-style-type: none"> <li>Branca (6500k)</li> <li>Neutra (4000k)</li> <li>Amarela (3000k)</li> </ul>	<ul style="list-style-type: none"> <li>12126500</li> <li>12124000</li> <li>12123000</li> </ul>
18W	1.200	Q	225*225mm*20mm N: 205mm*205mm	<ul style="list-style-type: none"> <li>Branca (6500k)</li> <li>Neutra (4000k)</li> <li>Amarela (3000k)</li> </ul>	<ul style="list-style-type: none"> <li>13186500</li> <li>13184000</li> <li>13183000</li> </ul>
18W	1.200	R	Ø225mm*20mm N: Ø205mm	<ul style="list-style-type: none"> <li>Branca (6500k)</li> <li>Neutra (4000k)</li> <li>Amarela (3000k)</li> </ul>	<ul style="list-style-type: none"> <li>12186500</li> <li>12184000</li> <li>12183000</li> </ul>
24W	1.680	Q	300*300mm*20mm N: 280mm*280mm	<ul style="list-style-type: none"> <li>Branca (6500k)</li> <li>Neutra (4000k)</li> <li>Amarela (3000k)</li> </ul>	<ul style="list-style-type: none"> <li>13246500</li> <li>13244000</li> <li>13243000</li> </ul>
24W	1.680	R	Ø300mm*20mm N: Ø280mm	<ul style="list-style-type: none"> <li>Branca (6500k)</li> <li>Neutra (4000k)</li> <li>Amarela (3000k)</li> </ul>	<ul style="list-style-type: none"> <li>12246500</li> <li>12244000</li> <li>12243000</li> </ul>
32W	3.200	Q	420*420mm*20mm N: 400mm*400mm	<ul style="list-style-type: none"> <li>Branca (6500k)</li> <li>Neutra (4000k)</li> <li>Amarela (3000k)</li> </ul>	<ul style="list-style-type: none"> <li>13326500</li> <li>13324000</li> <li>13323000</li> </ul>
40W	4.000	Q	620*620mm*20mm N: 595mm*595mm	<ul style="list-style-type: none"> <li>Branca (6500k)</li> <li>Neutra (4000k)</li> <li>Amarela (3000k)</li> </ul>	<ul style="list-style-type: none"> <li>13406500</li> <li>13404000</li> <li>13403000</li> </ul>



## LUMINÁRIAS LED SLIM



POT.	LUM.	FORMATO	TAMANHO	COR (K)	CÓDIGO
9W	900	RET.	300*75mm*25mm	<ul style="list-style-type: none"> <li>Branca (6500k)</li> <li>Neutra (4000k)</li> <li>Amarela (3000k)</li> </ul>	<ul style="list-style-type: none"> <li>20096500</li> <li>20094000</li> <li>20093000</li> </ul>
18W	1.800	RET.	600*75mm*25mm	<ul style="list-style-type: none"> <li>Branca (6500k)</li> <li>Neutra (4000k)</li> <li>Amarela (3000k)</li> </ul>	<ul style="list-style-type: none"> <li>20186500</li> <li>20184000</li> <li>20183000</li> </ul>
36W	3.200	RET.	1200*75mm*25mm	<ul style="list-style-type: none"> <li>Branca (6500k)</li> <li>Neutra (4000k)</li> <li>Amarela (3000k)</li> </ul>	<ul style="list-style-type: none"> <li>20366500</li> <li>20364000</li> <li>20363000</li> </ul>
72W	7.200	RET.	2400*75mm*25mm	<ul style="list-style-type: none"> <li>Branca (6500k)</li> <li>Neutra (4000k)</li> <li>Amarela (3000k)</li> </ul>	<ul style="list-style-type: none"> <li>20726500</li> <li>20724000</li> <li>20723000</li> </ul>

## LUMINÁRIAS LED SOBREPOR

POT.	LUM.	FORMATO	TAMANHO	COR (K)	CÓDIGO
6W	420	Q	120*120mm*30mm	<ul style="list-style-type: none"> <li>Branca (6500k)</li> <li>Neutra (4000k)</li> <li>Amarela (3000k)</li> </ul>	<ul style="list-style-type: none"> <li>15066500</li> <li>15064000</li> <li>15063000</li> </ul>
6W	420	R	Ø120mm*30mm	<ul style="list-style-type: none"> <li>Branca (6500k)</li> <li>Neutra (4000k)</li> <li>Amarela (3000k)</li> </ul>	<ul style="list-style-type: none"> <li>14066500</li> <li>14064000</li> <li>14063000</li> </ul>
12W	840	Q	170*170mm*30mm	<ul style="list-style-type: none"> <li>Branca (6500k)</li> <li>Neutra (4000k)</li> <li>Amarela (3000k)</li> </ul>	<ul style="list-style-type: none"> <li>15126500</li> <li>15124000</li> <li>15123000</li> </ul>
12W	840	R	Ø170mm*30mm	<ul style="list-style-type: none"> <li>Branca (6500k)</li> <li>Neutra (4000k)</li> <li>Amarela (3000k)</li> </ul>	<ul style="list-style-type: none"> <li>14126500</li> <li>14124000</li> <li>14123000</li> </ul>
18W	1.200	Q	220*220mm*30mm	<ul style="list-style-type: none"> <li>Branca (6500k)</li> <li>Neutra (4000k)</li> <li>Amarela (3000k)</li> </ul>	<ul style="list-style-type: none"> <li>15186500</li> <li>15184000</li> <li>15183000</li> </ul>
18W	1.200	R	Ø220mm*30mm	<ul style="list-style-type: none"> <li>Branca (6500k)</li> <li>Neutra (4000k)</li> <li>Amarela (3000k)</li> </ul>	<ul style="list-style-type: none"> <li>14186500</li> <li>14184000</li> <li>14183000</li> </ul>
24W	1.680	Q	300*300mm*30mm	<ul style="list-style-type: none"> <li>Branca (6500k)</li> <li>Neutra (4000k)</li> <li>Amarela (3000k)</li> </ul>	<ul style="list-style-type: none"> <li>15246500</li> <li>15244000</li> <li>15243000</li> </ul>
24W	1.680	R	Ø300mm*30mm	<ul style="list-style-type: none"> <li>Branca (6500k)</li> <li>Neutra (4000k)</li> <li>Amarela (3000k)</li> </ul>	<ul style="list-style-type: none"> <li>14246500</li> <li>14244000</li> <li>14243000</li> </ul>
32W	3.200	Q	420*420mm*34mm	<ul style="list-style-type: none"> <li>Branca (6500k)</li> <li>Neutra (4000k)</li> <li>Amarela (3000k)</li> </ul>	<ul style="list-style-type: none"> <li>15326500</li> <li>15324000</li> <li>15323000</li> </ul>
40W	4.000	Q	600*600mm*34mm	<ul style="list-style-type: none"> <li>Branca (6500k)</li> <li>Neutra (4000k)</li> <li>Amarela (3000k)</li> </ul>	<ul style="list-style-type: none"> <li>15406500</li> <li>15404000</li> <li>15403000</li> </ul>



## LUMINÁRIAS LED RETANGULARES DE SOBREPOR



POT.	LUM.	FORMATO	TAMANHO	COR (K)	CÓDIGO
22W	2.200	RET.	600*150mm*39mm	<ul style="list-style-type: none"> <li>Branca (6500k)</li> <li>Neutra (4000k)</li> <li>Amarela (3000k)</li> </ul>	<ul style="list-style-type: none"> <li>28226500</li> <li>28224000</li> <li>28223000</li> </ul>
32W	3.200	RET.	600*300mm*39mm	<ul style="list-style-type: none"> <li>Branca (6500k)</li> <li>Neutra (4000k)</li> <li>Amarela (3000k)</li> </ul>	<ul style="list-style-type: none"> <li>27326500</li> <li>27324000</li> <li>27323000</li> </ul>
32W	3.200	RET.	1200*150mm*39mm	<ul style="list-style-type: none"> <li>Branca (6500k)</li> <li>Neutra (4000k)</li> <li>Amarela (3000k)</li> </ul>	<ul style="list-style-type: none"> <li>28326500</li> <li>28324000</li> <li>28323000</li> </ul>
40W	4.000	RET.	1200*300mm*39mm	<ul style="list-style-type: none"> <li>Branca (6500k)</li> <li>Neutra (4000k)</li> <li>Amarela (3000k)</li> </ul>	<ul style="list-style-type: none"> <li>27406500</li> <li>27404000</li> <li>27403000</li> </ul>

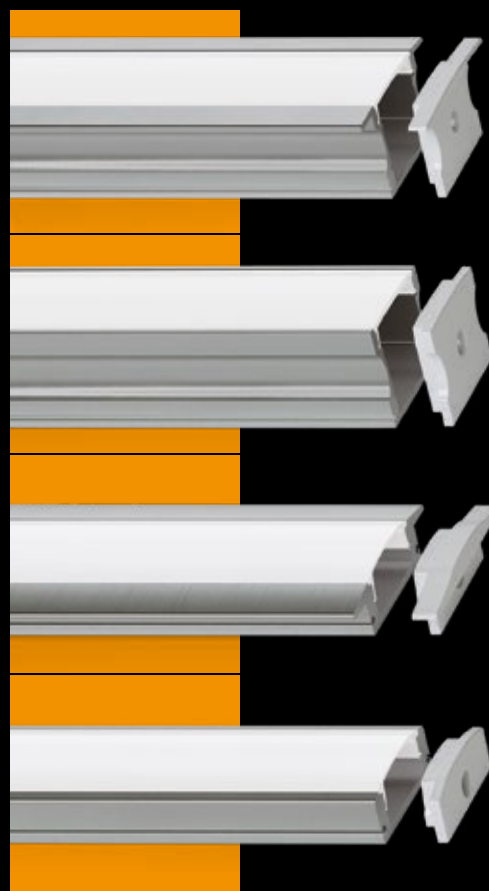


# PERFIL LED ALUMÍNIO



Fabricado no Brasil

FORMATO	TAMANHO	COR ACAB.	CÓDIGO
EMBUTIR 25x14 mm	3 m	• Branco	PF-BC-251403
	2 m	• Branco	PF-BC-251402
	1 m	• Branco	PF-BC-251401
	3 m	• Preto	PF-PR-251403
	2 m	• Preto	PF-PR-251402
	1 m	• Preto	PF-PR-251401
SOBREPOR 17x14 mm	3 m	• Branco	PF-BC-171403
	2 m	• Branco	PF-BC-171402
	1 m	• Branco	PF-BC-171401
	3 m	• Preto	PF-PR-171403
	2 m	• Preto	PF-PR-171402
	1 m	• Preto	PF-PR-171401
EMBUTIR 25x07 mm	3 m	• Branco	PF-BC-250703
	2 m	• Branco	PF-BC-250702
	1 m	• Branco	PF-BC-250701
	3 m	• Preto	PF-PR-250703
	2 m	• Preto	PF-PR-250702
	1 m	• Preto	PF-PR-250701
SOBREPOR 17x07 mm	3 m	• Al. Natural	PF-AL-250703
	2 m	• Al. Natural	PF-AL-250702
	1 m	• Al. Natural	PF-AL-250701
	3 m	• Branco	PF-BC-170703
	2 m	• Branco	PF-BC-170702
	1 m	• Branco	PF-BC-170701
	3 m	• Preto	PF-PR-170703
	2 m	• Preto	PF-PR-170702
	1 m	• Preto	PF-PR-170701
3 m	• Al. Natural	PF-AL-170703	
2 m	• Al. Natural	PF-AL-170702	
1 m	• Al. Natural	PF-AL-170701	



## REFLETOR ALUMÍNIO ESTAMPADO



Fabricado no Brasil



MODELO	BOCAL	TAMANHO	C/ ALOJAMENTO	LÂMPADA
RLE 1000	E-40	510*270*160mm		Metálica 1000W
RLE 400	E-40	360*270*160mm	525*270*160mm	Compacta até 85W Mista 500W Mercúrio 250/500W Metálica 250/400W Sódio 250/400W
RLE 250	E-27	270*270*160mm	440*270*160mm	Mercúrio 125W Mista 250W
RLE 160	E-27	200*175*115mm		Compacta até 27W Mercúrio 80/125W



## RELATÓRIOS DE TESTES

Todos os produtos LED Spotlux possuem testes que comprovam a qualidade e informações declaradas na embalagem de cada produto.



— DESDE 2002 —  
Pode comprar no escuro.

Ligue agora e consulte preços e condições especiais.  
Veja esse e outros produtos pelo site:



[www.spotlux.com.br](http://www.spotlux.com.br)  
+55 (41) 3091-8600 | [spotlux@spotlux.com.br](mailto:spotlux@spotlux.com.br)  
Rua Rudi Labsch, 293 CIC Curitiba - PR | CEP: 81350-210